

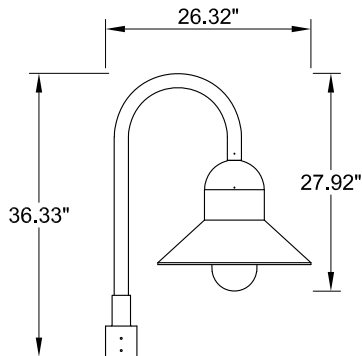
INSTALLATION AND SERVICE MANUAL



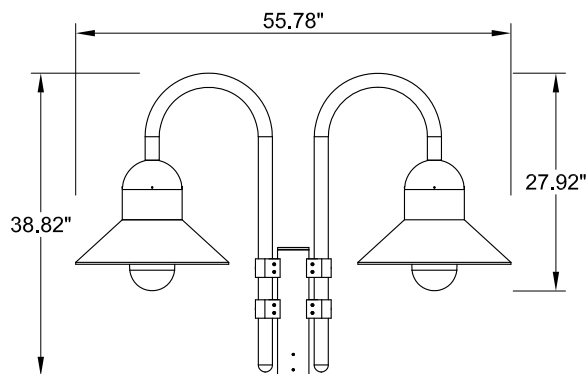
For installation of Atlantic sheppards crook medium shade post top LED.
Model. UAA-20767, UAA-20768.

Product drawing (dlmenslons)

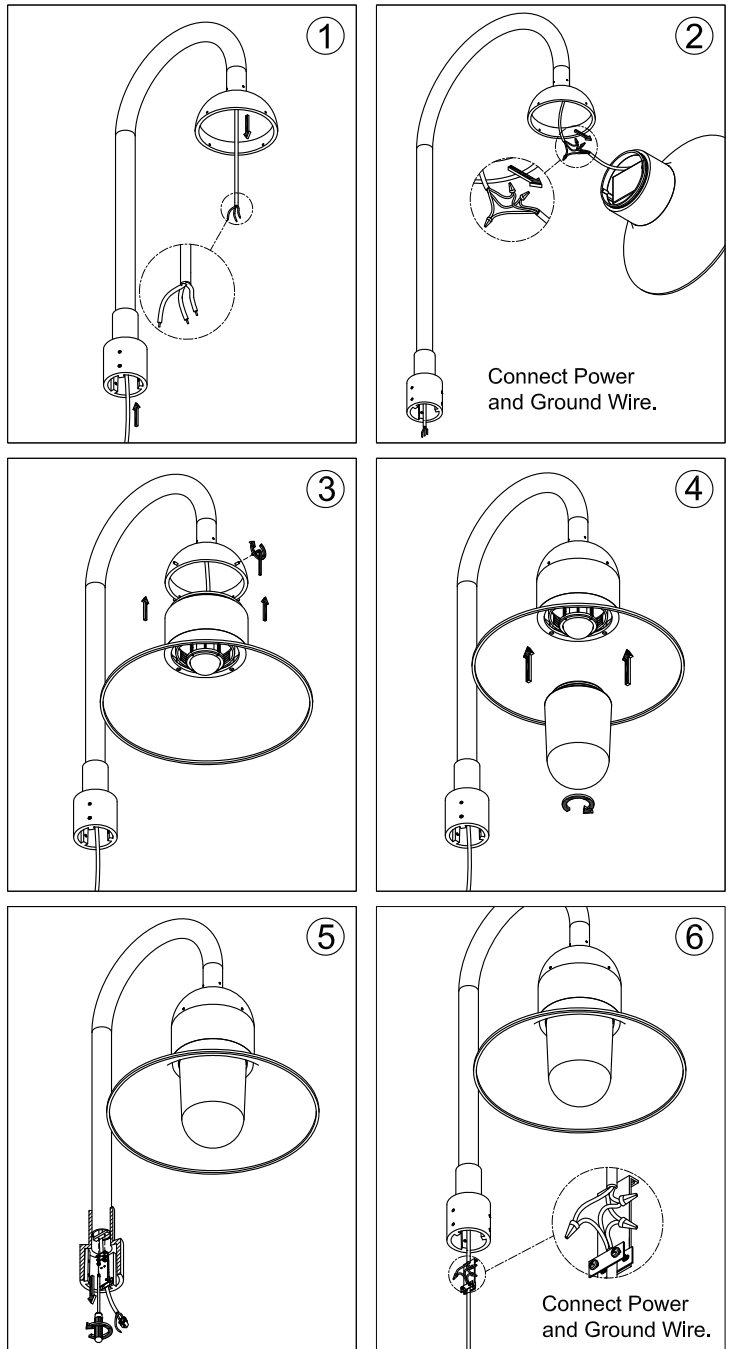
SUITABLE FOR WET LOCATIONS



UAA-20767



UAA-20768



Notice to installer :

- 1.WIRING INSTRUCTIONS** Warning : RISK OF FIRE AND ELECTRICAL SHOCK. : FIXTURE MUST BE INSTALLED BY A QUALIFIED ELECTRICIAN ONLY>FIXTURE IS INTENDED FOR INSTALLATION IN ACCORDANCE WITH THE NATIONAL ELECTRICAL CODE, LOCAL AND FEDERAL CODE SPECIFICATIONS. DISCONNECT POWER BEFORE SERVICING.
- 2.This flxture has a VOLTAGE SPECIFIC BALLAST,Check that the supply voltage Is the same as the Installed ballast voltage.**

Ligman Lighting USA

7144 NE Progress Court, Hillsboro
Oregon, 97124, USA
Tel : 503 645 0500 | Fax : 503 645 8100

www.ligmanlightingusa.com

UAA-20767 07/05/24 REV.1
1/2

FM-TS-13-1/13-05-2563/Rev.6

